

DESIGN CONSIDERATIONS

Remote Professional Learning

COMMUNITY OF LEARNERS



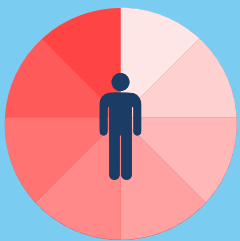
- How will you create a safe environment for participants? When will you introduce community agreements or norms to the group?
- How will the agreements or norms be created?
- What other activities will you use to help facilitate the community environment?

COLLABORATIVE PRACTICES



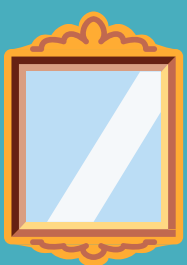
- What strategies will you use that will allow participants to collaborate?
- What digital tools, if any, will you need to help facilitate collaboration?
- How many people should feasibility be placed in a group to ensure equality of voice?

PERSONALIZED LEARNING



- When will you gather information about participants to learn their individual needs?
- How will you honor the varying experiences that participants bring to the session?
- What opportunities for choice can you add to the session?

REFLECTIVE DESIGN



- How much time will you give participants to reflect?
- When will you give participants time to reflect, i.e., at the beginning of the session, middle, and/or end?
- At what point will you ask participants to commit to making a change in their practice?
- What specific strategies will you use to help participants reflect on their learning?