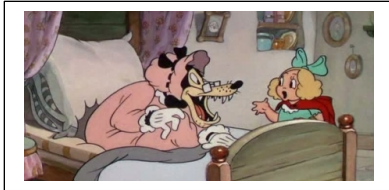


Comparing and Contrasting Fairy Tales—Model

Look at the examples below. They show you how to compare two fairy tale characters using a Venn diagram. Study this model before you begin to work on comparing female protagonists on the next page.

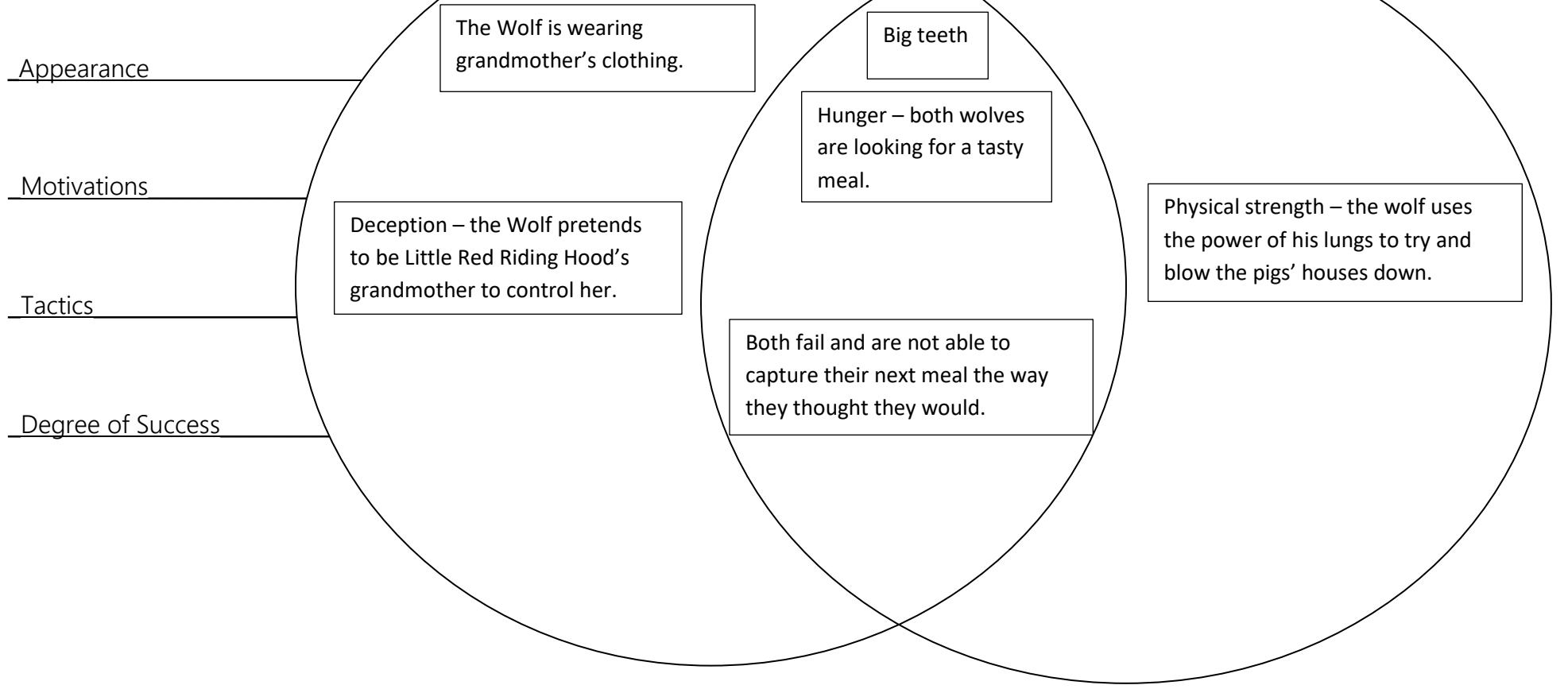


The Wolf (*Little Red Riding Hood*)



The Big Bad Wolf (*The Three Pigs*)

How We Compare Them:

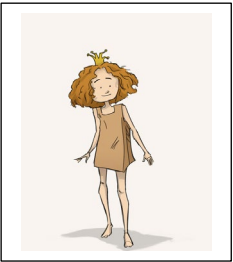


Comparing and Contrasting Fairy Tales

As a class, we will compare and contrast the main character of The Grimm Brothers' Cinderella with *The Paper Bag Princess* in the Venn diagram. Look at the samples for comparing them by appearance and background below. Then fill in the Venn diagram with similarities and differences for personality, perspective, and actions.



Fairy Tale #1: Cinderella



Fairy Tale #2: The Paper Bag Princess

How to Compare Them:

Appearance

Background

Motivations

Tactics

Degree of Success

