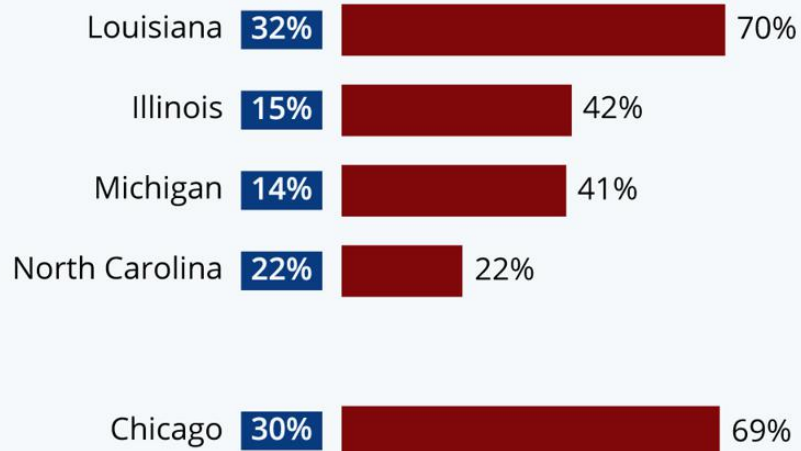


Social Issues Graphics for See, Think, Wonder

COVID-19's Devastating Impact On African Americans

African American share of state/city populations and COVID-19 deaths (as of Apr 06, 2020)

■ Share of state/city's population ■ Share of COVID-19 deaths

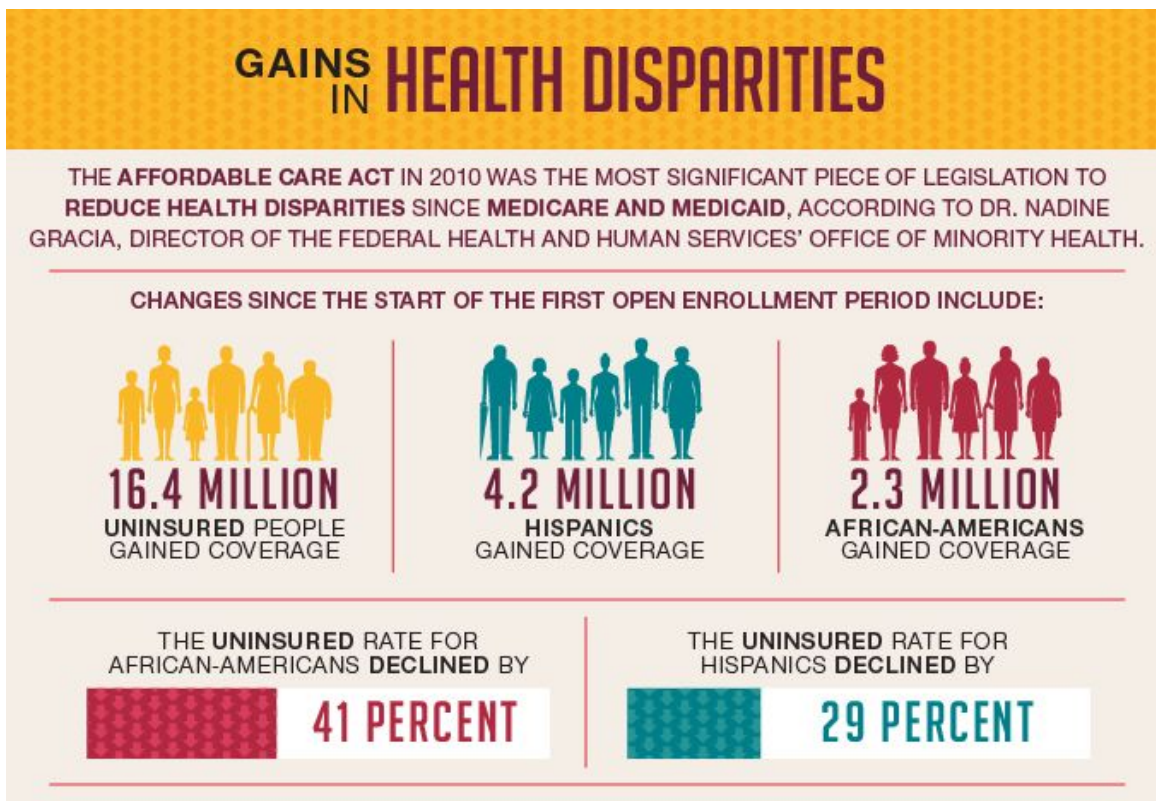


Sources: 2010 Census, respective state/city health departments



Forbes **statista**

Social Issues Graphics for See, Think, Wonder



Source: U.S. Department of Health and Human Services



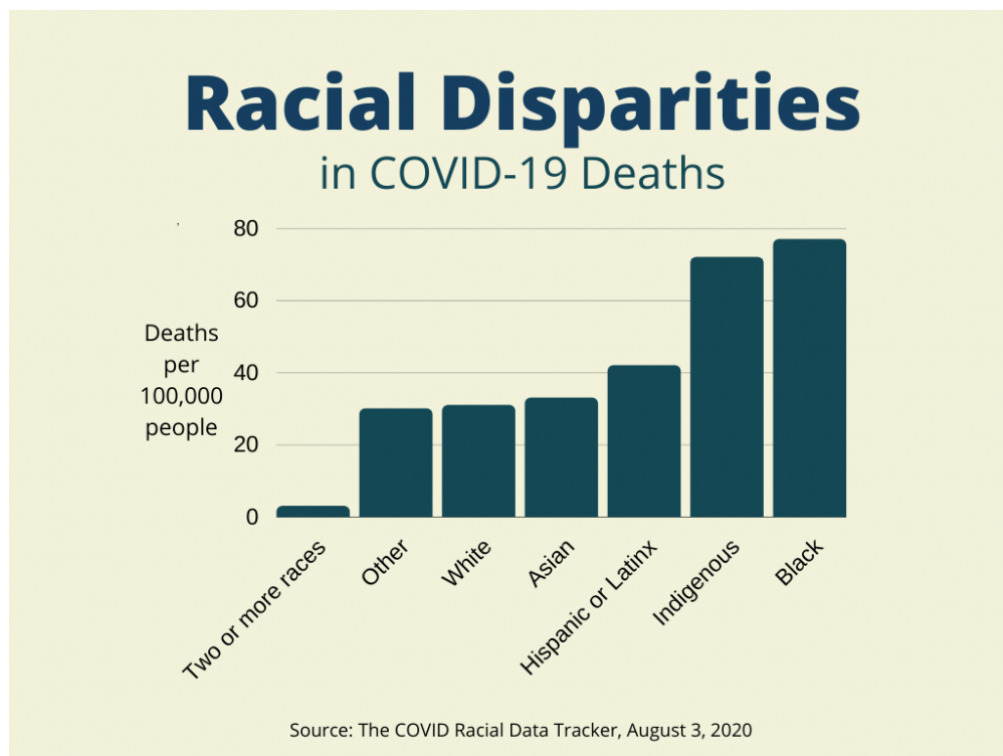
 Black children often lack access to **opportunity**. In the Cleveland Metropolitan School District, white students are **1.9x** as likely to be enrolled in **gifted programs** as black students.



Social Issues Graphics for See, Think, Wonder

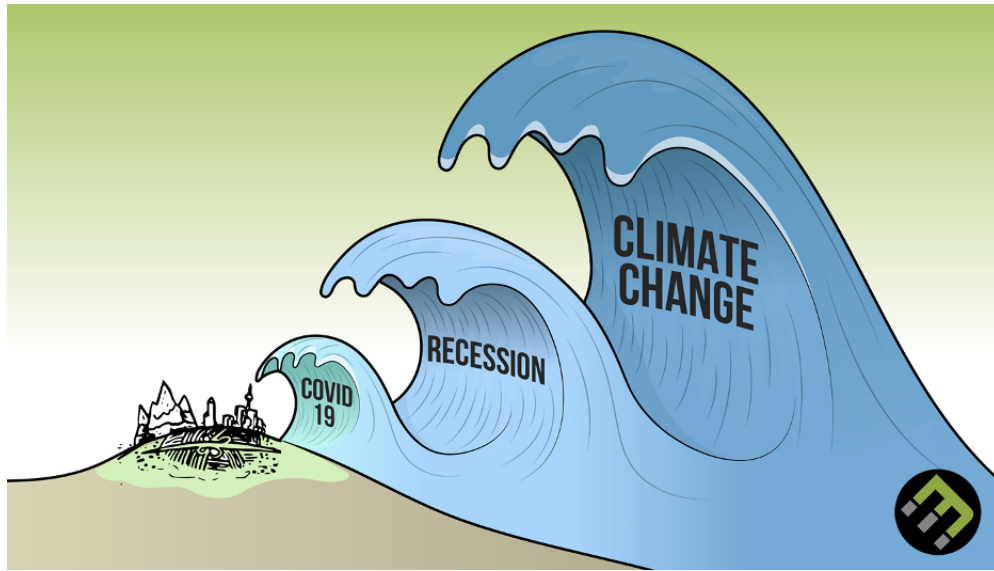


Racial Inequalities



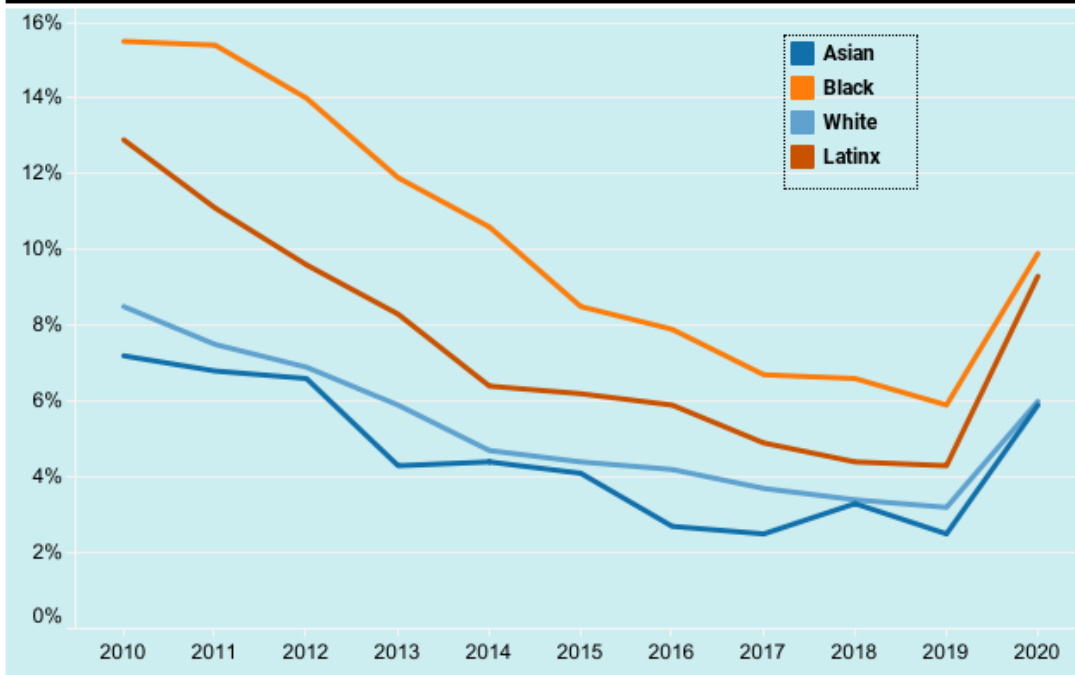
Curated by Jorge Valenzuela of LLD, Inc.

Social Issues Graphics for See, Think, Wonder



Black Unemployment Runs About Four Points Higher Than Whites

U.S. unemployment rate by race, last month of the year, 2010-2020



Source: Bureau of Labor Statistics

+ a b | e a u