



DATA ANALYSIS

2022 MATH MCAP

Presented by:
Sabrina N. Crusoe & Adri Westlake





BINGO - DIRECTIONS

- Traditional Bingo
 - Horizontal
 - Vertical
 - Diagonal
- Only terms found within the presentation
- Must be able to explain the term within the context of data



Mission Possible: Math MCAP Data

Reporting Category	Beginning Learner	PGCPS	Developing Learner
Problem of Practice	Maryland	School	Proficient Learner
Performance Levels	Demographic Data	State	BLMS
Subgroups	Distinguished Learner	LEA	Type I





DATA LITERACY

HOW DO WE USE THE RESULTS
TO MAKE INFORMED DECISIONS





PROCESS



01

PLAN

Review essential elements that lead to our plan

02

DO

Review elements of departmental action steps

03

STUDY

Group exploration into data results

04

ACT

Adjustments - Next Steps





01

PLAN

Review essential elements that lead to our plan



PLAN

PROBLEM OF PRACTICE

(PoP)

Teachers are not utilizing literacy strategies that aid students in solving reasoning questions; therefore, students are not mastering how to solve reasoning tasks.



02

DO

Review elements of departmental action steps



DO

ACTION STEPS IMPLEMENTED

SY 2021/2022 & SY 2022/2023

Writing Literacy Strategy

CER

Learning Walks with
departmental and
*individual feedback

Reading Literacy Strategy

CUBES & 3Read

Analysis of Student Work
Samples w/ MCAP Holistic
Rubric



MENU

ANALYSIS

CONTACT

DATA ANALYSIS



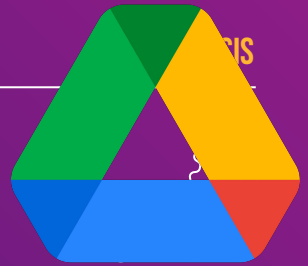
STUDY

Group exploration into data results





STUDY: JIG-SAW



Demographic Performance
Level Summaries



Evidence Statements



Reporting Categories

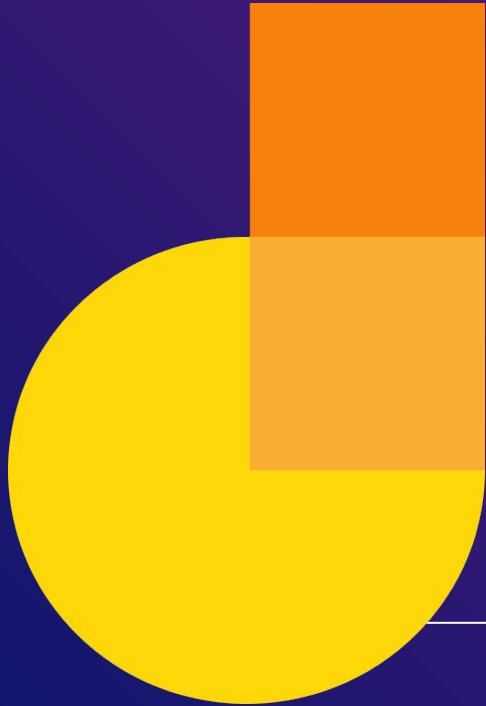
In Groups: Review your assigned folder of math data. Be prepared to discuss findings

Guiding Questions: What part of the data catches your attention? What trends or patterns emerged? What did you find surprising/unexpected? What indications of student success are present?



STUDY: JIG-SAW

Guiding Questions: What part of the data catches your attention? What trends or patterns emerged? What did you find surprising/unexpected? What indications of student success are present?





04

ACT

Adjustments - Next Steps





MATH LEADERSHIP TEAM - ACTION STEPS



PROFESSIONAL DEVELOPMENT



Provide a professional development around CER to ensure all math teachers are clear on student and teacher expectations regarding implementation of and scoring of task.



Provide professional development on how to explicitly teach test-taking strategies

AND

QUARTERLY ADVISORY PROGRAM

Create a 13-week math advisory plan to target common weak skills, each quarter students rotate advisory to benefit from additional time with math teacher.

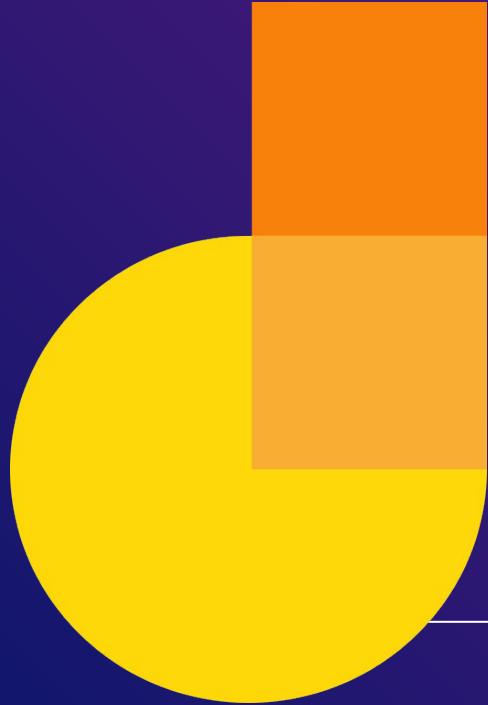


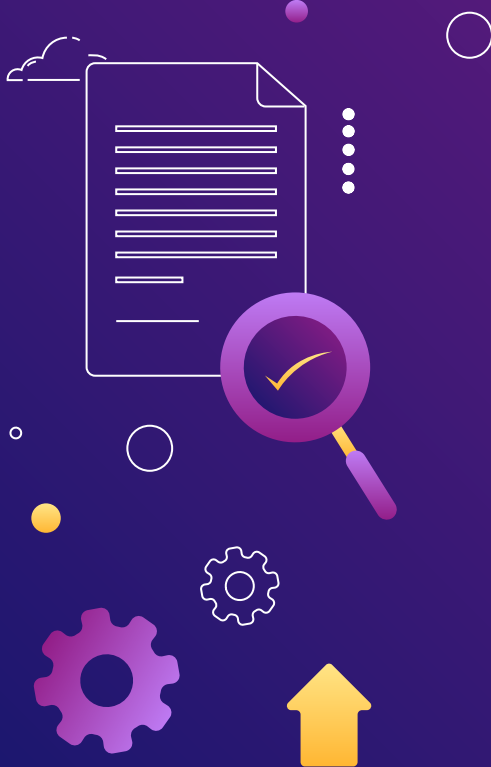
Create a 13-week program for explicit test taking strategies



ACT: STAFF SUGGESTIONS

Guiding Questions: What suggestions do you have to support students and staff navigate our PoP?





PRIZES

Courtesy of Mr. Nance and >>>>>>



QUESTIONS???